

Hollow Wall Anchor Installation Guide



This guide will give you detailed instructions (with illustrations) on how to install Hollow Wall Anchors properly. There is also information on the wall board thickness, and drill size for different size anchors.

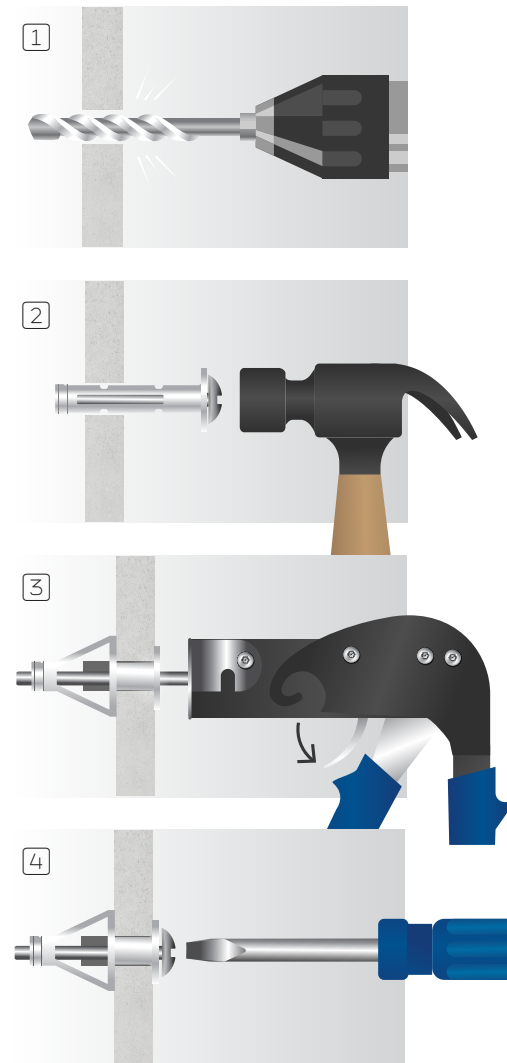
Common Applications

- Coat Hooks
- Wall Mounts
- Curtain Poles
- Kitchen cupboards
- Wall Shelves

Information Table

Milsons Code	Diameter	Wall Board Thickness	Drill Size	Thread Size
HWA1/8WT1624	1/8	16mm - 24mm	8mm	4mm
HWA1/8WT316	1/8	13mm - 16mm	8mm	4mm
HWA3/16WT1016	3/16	10mm - 16mm	10mm	5mm

Installation Instructions



1 Pre-drill an appropriate size hole, using the table above to determine the correct size drill bit for your anchor's diameter, and the correct depth hole required for your anchor's length.

2 Insert your wall anchor and tap in with a mallet or hammer. Ensure the teeth dig into the wall board.

3 **Setting with a Tool:**
Using a Setting Tool - put the tip of the setting tool into the screw head. Once securely in, pull the setting tool's front handle to expand the anchor. Continue to pull until you feel a solid pressure before disengaging the tool.

4 **Setting with a Screwdriver:**
Use a screwdriver if you do not have a setting tool. Press firmly on the screw with the screwdriver and turn the screw clockwise until the barrel crimps are pressed firmly against the inside of the wallboard.

i The data provided in this document is for general guidance only and should not be solely relied upon when working to stringent specifications. We recommend consulting with qualified experts regarding any technical queries. This information may change without written notice.